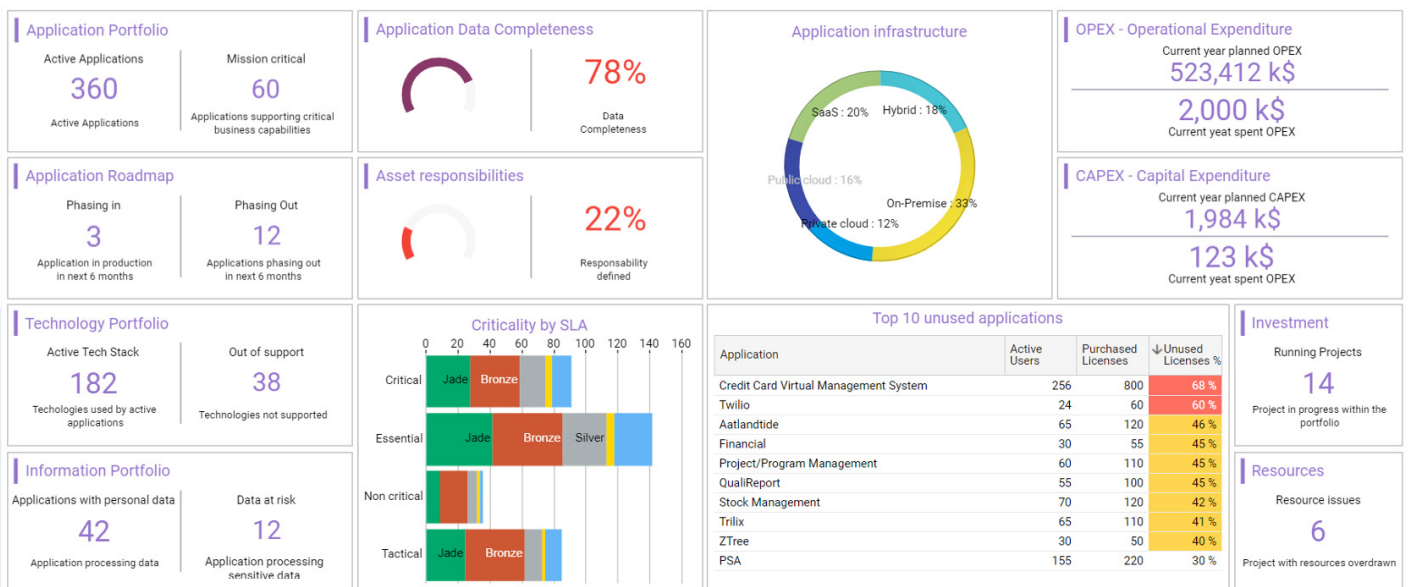


IT PORTFOLIO MANAGEMENT

PRIORITIZE PROJECTS BASED ON BUSINESS PRIORITY AND OPTIMIZE YOUR ROI FOR YOUR IT DEPARTMENT.

Optimize your IT landscape to invest in innovative areas and create the needed competitive advantage your business needs leveraging an IT Portfolio Management solution. Maintain a registry of your applications, technology, and IT assets to monitor obsolescence, technical debt, and misalignment to strategic business priorities.



BENEFITS



Cut costs

Catalog, assess, and change your IT landscape through various criteria to eliminate unnecessary spending or IT projects.



Prioritize projects

Prioritize applications or technology transformation projects based on your existing and future landscape.



Quick time to value

Combine Agile Portfolio Management, Demand Management and Resource Allocation to ensure successful delivery.

PROCESS STEPS

1.

Inventory/Registry of your IT landscape

Crowdsource collection of your IT assets inventory such as Application, Technology, and Data. Map them to Business Assets such as Capabilities, Business Processes and Organizations. Understand dependencies and change impacts as well as the lifecycle of each IT assets.

2.

Assess your IT assets and create portfolio priority

Categorize your applications to decide which you should tolerate, invest, migrate or eliminate. Make sure your portfolio priority is aligned with business value and technical fit. Reduce security risks by embracing the latest technology standards and monitor which IT assets support the business and contribute to your OKRs.

3.

Change and projects

Understand the level of maturity of your capabilities by people, process, technology, information and identify how projects contribute to your business capabilities. Prioritize projects based on cost, capacity, and OKR achievements.

KEY FEATURES

Planisware Enterprise proposes 6 core features for each phase of your APM practice.



Application portfolio governance



Application TCO



Plannings and road mapping



Application rationalization



Technology Standard alignment



Application transformation

INPUT

Application Architect
Application Owner
Portfolio Manager
Business Users



Catalog / Inventory

Capabilities, processes, technologies, data, ...



Matrices / Dependencies

What or Which assets is impacted, ...



View / Modeling

Visual representation of the assets, ...

OUTPUT

CIO / CTO
Chief Strategy Officer
Program Manager
Project Manager
Business Users



Dashboards

Aggregated view of indicators, costs, roadmaps, ...



Reporting

Present results and outcomes, ...



Publication

Expose information to a wide audience, ...

INVENTORY

Build your catalog of applications, technologies, and physical assets

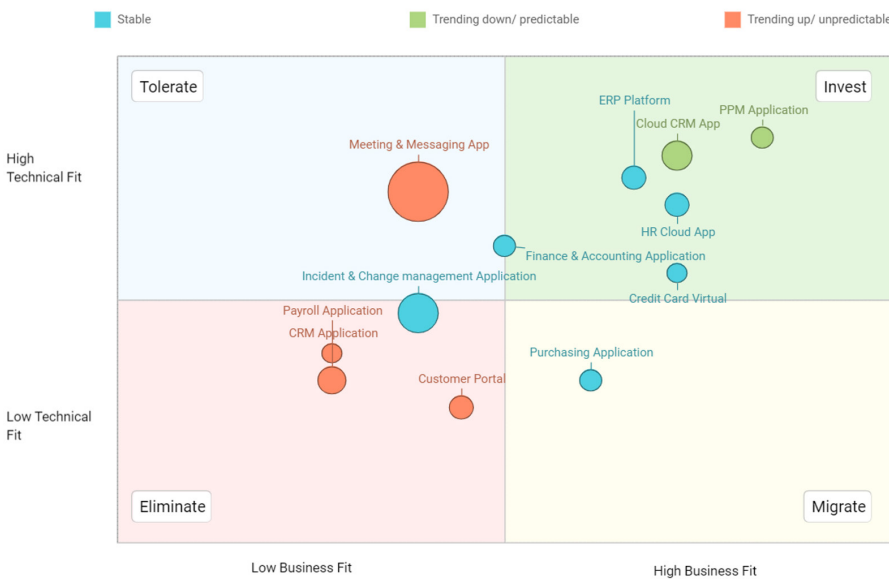
- Bootstrap your inventory with data coming from CMDB such as Service Now
- Use spreadsheet ready templates to input the data
- Assign responsibilities to IT assets, such as Application Owner, Business User, Portfolio Manager
- Crowdsource data collection with Extended Shares

| All applications - APM * | | | | | | | | | | | | | | |
|--------------------------|---------|-----------------------|-----------------------------|---------------|------------|--------------------------|-----------------|------|-------------------------|-----------------|---------------------|--------------|--------|--|
| Open | Diagram | Name | Business & functional value | Technical fit | TIME model | Candidate for retirement | Number of users | Type | Architecture type | Hosting type | Mission criticality | SLA | | |
| <input type="checkbox"/> | | Confluent | Sufficient | ★★★★☆ | Sufficient | ★★★★☆ | Invest | 161 | Mixed | Web based | SaaS | Critical | Gold | |
| <input type="checkbox"/> | | Content Management | Unsuitable | ☆☆☆☆ | Sufficient | ★★★★☆ | Tolerate | 798 | Commercial Off-the-s... | N-tier | On-Premise | Essential | Silver | |
| <input type="checkbox"/> | | Contract Management | Unsuitable | ☆☆☆☆ | Sufficient | ★★★★☆ | Tolerate | 150 | Commercial Off-the-s... | Client - Server | On-Premise | Essential | Bronze | |
| <input type="checkbox"/> | | Core Bank System | Unsuitable | ☆☆☆☆ | Perfect | ★★★★★ | Tolerate | 629 | Mixed | N-tier | Public cloud | Essential | Bronze | |
| <input type="checkbox"/> | | Credit Card VM System | Sufficient | ★★★★☆ | Sufficient | ★★★★☆ | Invest | 256 | Commercial Off-the-s... | Web based | Private cloud | Essential | Ivory | |
| <input type="checkbox"/> | | CRM & Sales | Poor | ★★★☆☆ | Poor | ★★★☆☆ | Eliminate | 436 | Mixed | Web based | Private cloud | Critical | Ivory | |
| <input type="checkbox"/> | | Cloud CRM App | Sufficient | ★★★★☆ | Perfect | ★★★★★ | Invest | 577 | Mixed | Client - Server | On-Premise | Critical | Silver | |
| <input type="checkbox"/> | | CRM Application | Poor | ★★★☆☆ | Sufficient | ★★★★☆ | Tolerate | 166 | Commercial Off-the-s... | N-tier | On-Premise | Critical | Ivory | |
| <input type="checkbox"/> | | CRM Home-grown V3 | Poor | ★★★☆☆ | Perfect | ★★★★★ | Tolerate | 195 | Commercial Off-the-s... | N-tier | On-Premise | Critical | Ivory | |
| <input type="checkbox"/> | | Customer Data Access | Sufficient | ★★★★☆ | Poor | ★★★☆☆ | Migrate | 270 | Commercial Off-the-s... | Web based | SaaS | Non critical | Ivory | |
| <input type="checkbox"/> | | Customer Repository | Sufficient | ★★★★☆ | Perfect | ★★★★★ | Invest | 360 | Commercial Off-the-s... | Web based | Private cloud | Essential | Ivory | |
| <input type="checkbox"/> | | Data Warehouse | Perfect | ★★★★★ | Unsuitable | ☆☆☆☆ | Migrate | 439 | Commercial Off-the-s... | Client - Server | Private cloud | Essential | Ivory | |
| <input type="checkbox"/> | | Datorama | Perfect | ★★★★★ | Poor | ★★★☆☆ | Migrate | 131 | Mixed | Platform host | Hybrid | Essential | Bronze | |
| <input type="checkbox"/> | | Diligent | Perfect | ★★★★★ | Sufficient | ★★★★☆ | Invest | 642 | Commercial Off-the-s... | N-tier | Public cloud | Critical | Bronze | |
| <input type="checkbox"/> | | Document Managem... | Perfect | ★★★★★ | Perfect | ★★★★★ | Invest | 788 | Commercial Off-the-s... | Other | Private cloud | Critical | Bronze | |
| <input type="checkbox"/> | | Documentation Repo... | Unsuitable | ☆☆☆☆ | Perfect | ★★★★★ | Tolerate | 644 | Mixed | Client - Server | On-Premise | Critical | Bronze | |

ASSESS

Identify opportunities to streamline your portfolio

Applications matrix (TIME)

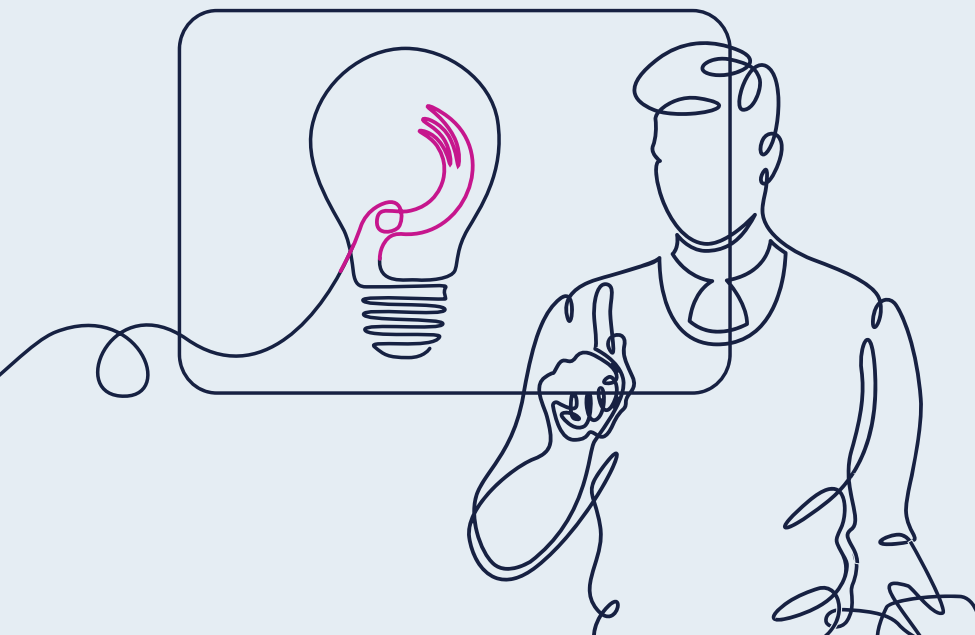
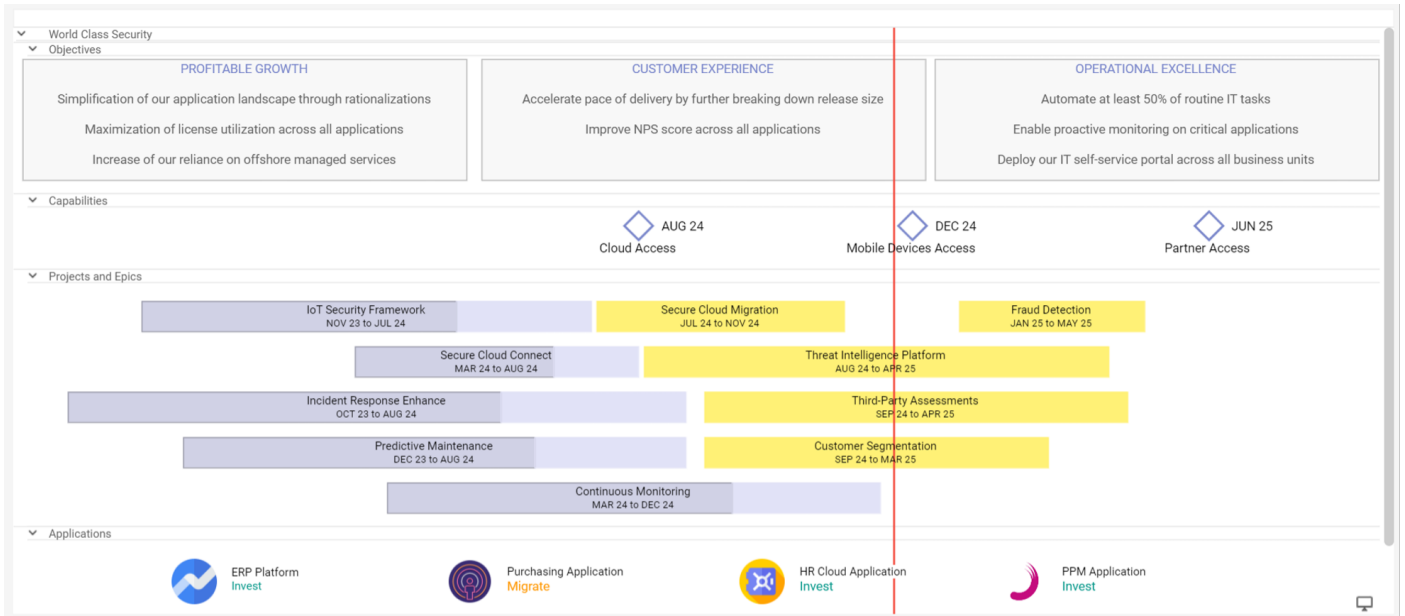


- Tolerate, Invest, Migrate, or Eliminate your IT assets
- Perform assessment review for business value, technical fit, or mission critical level
- Manage the lifecycle of your assets to anticipate changes
- Consider environmental dimensions to IT energy consumptions

CHANGE

Prioritize projects based on strategic priorities

- Identify projects aligned to strategic OKR
- Chose best mix of projects for budget constraints
- Turn ideas into projects aligned with business outcomes.



PLANISWARE
ENTERPRISE