

Planisware

# Top Ten Dashboards for PMOs to Streamline Operations and Achieve Success



# Table of Contents

Executive Summary	03
Dashboard #1 – <b>Enterprise Demand Management</b>	04
Dashboard #2 – <b>Scenario Comparisons</b>	06
Dashboard #3 – <b>Resource Management</b>	07
Dashboard #4 – <b>Portfolio Overview</b>	08
Dashboard #5 – <b>Portfolio Health</b>	09
Dashboard #6 – <b>Capacity Planning</b>	10
Dashboard #7 – <b>Project Health</b>	11
Dashboard #8 – <b>Project Gate Review</b>	12
Dashboard #9 – <b>Cycle Time Report</b>	13
Dashboard #10 – <b>ESG Portfolio</b>	14
Conclusion	15



# Executive Summary

This eBook introduces the top ten project and portfolio dashboards every PMO needs to streamline operations and achieve success. Whether you're handling ideas or tracking environmental metrics, these tools provide real-time data and insights to keep your projects on track.

Each one meets specific needs, from prioritizing projects and managing resources to ensuring compliance with ESG standards. With these, PMOs can make informed decisions, boost efficiency, and get better outcomes across their portfolios. They are essential for project managers, resource managers, and executives who want to stay ahead of the curve and ensure their projects succeed.

Ready to see how these dashboards can transform your project management practices and lead to greater efficiency and success? Let's get started!



# Dashboard #1 Enterprise Demand Management



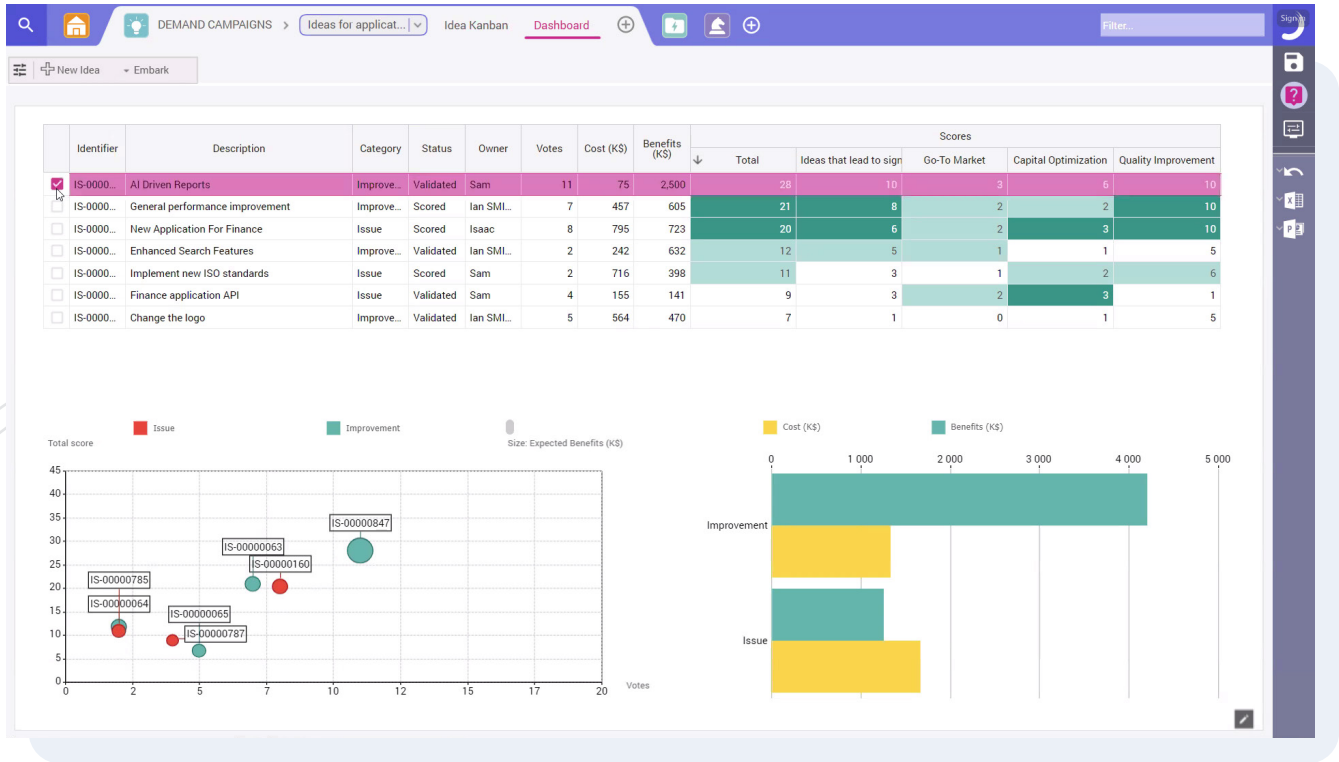
This tool acts as your command center for managing the flow of ideas and requests from your team. Here's how it benefits your PMO:

- **Captures Ideas:** Streamlines the process of collecting and organizing new ideas and requests.
- **Creates Business Cases:** Helps you build and document strong business cases for potential projects.
- **Evaluates Proposals:** Allows for thorough evaluation of each proposal based on key criteria.
- **Compares Scenarios:** Enables side-by-side comparisons of different project scenarios to identify the best options.
- **Optimizes Your Pipeline:** Ensures your project pipeline is optimized for efficiency and strategic alignment.

On top, you'll find a list of all the requests from the business, complete with details like categories, statuses, owners, and votes. On the right side, there's a scoring matrix that helps you figure out which ideas to prioritize based on factors like cost, benefits, and other important criteria like Go-To Market and Quality Improvement. Below that, you'll find some handy visuals, including scatter plots and bar charts, which make it super easy to see the cost versus benefits and whether you're dealing with more improvements or issues.



This dashboard makes it easier for PMOs to decide which projects to greenlight, ensuring you focus on the most strategic and beneficial initiatives, saving you time and boosting efficiency.





# Dashboard #2

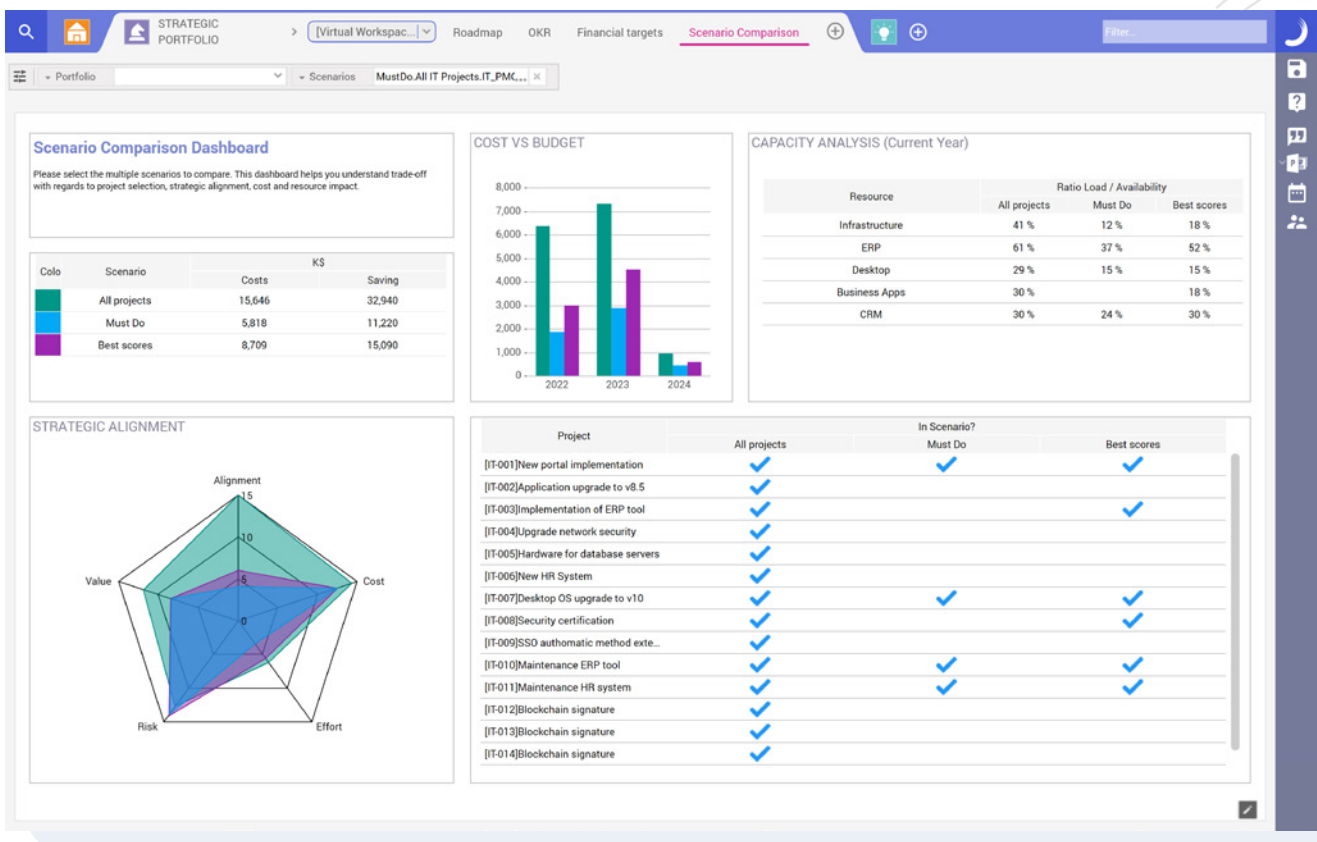
## Scenario Comparisons



This tool allows you to assess different portfolio scenarios side-by-side.

It breaks down the costs and benefits of each option, helping you identify the scenario that aligns best with your business objectives. By providing a clear comparison, it simplifies the decision-making process, ensuring you choose the most strategic path forward.

On the left, you'll see how each scenario aligns with your strategy, looking at things like value, scalability, and effort. On the right, you can see how each scenario affects your resources, which gives you a clear picture of which option is most practical and resource efficient. Consequently, this dashboard is essential for making decisions, especially during meetings with stakeholders, as it helps you present your options and choose the best path for your portfolio. This way, your decisions are based on solid data and align with your strategic goals, keeping your business on the right track.





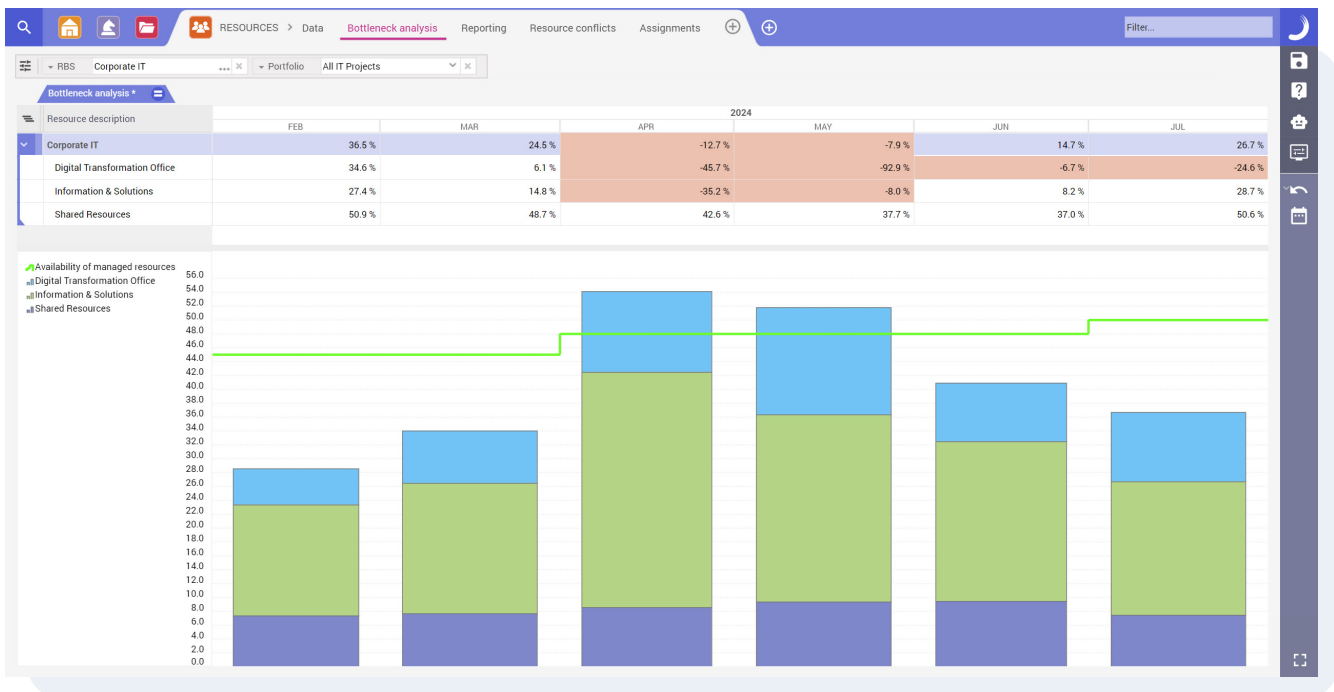
# Dashboard #3

## Resource Management



This tool is perfect for optimizing resource allocations, spotting bottlenecks, and ensuring efficient use of resources.

As a PMO leader or resource manager, this visual dashboard helps you see exactly where your departments or specific resource types are overallocated, making it clear where adjustments are needed. It's a powerful way to keep track of capacity and address issues before they become bigger problems. By using this dashboard, you can ensure that resources are always in the right place at the right time, keeping projects and teams on track.





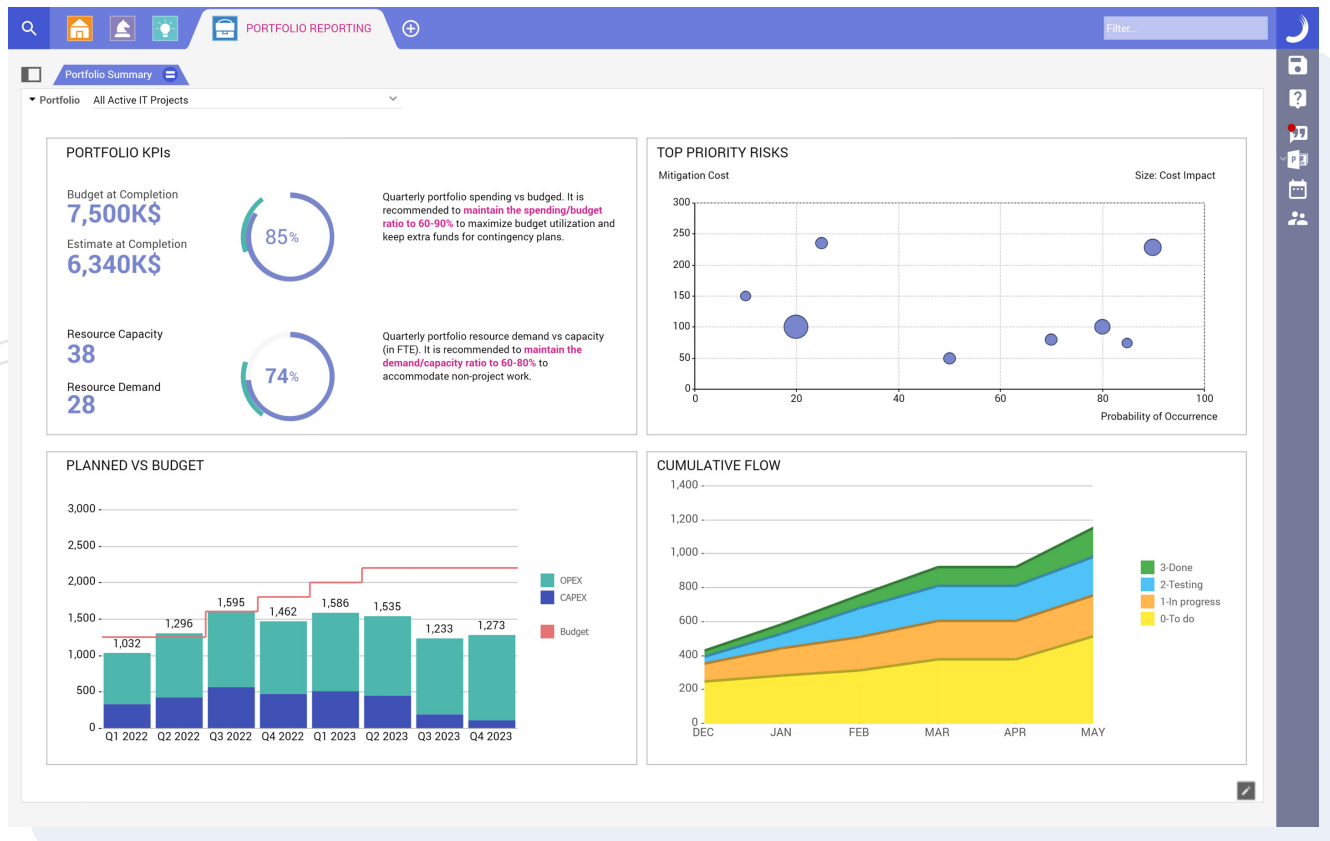
# Dashboard #4

## Portfolio Overview



This tool gives executives a high-level overview of their portfolios' key metrics and strategic insights, making it perfect to quickly check on health and performance. It ensures your portfolio runs smoothly and stays within budget, allowing you to manage it with a clear, high-level view of everything that matters.

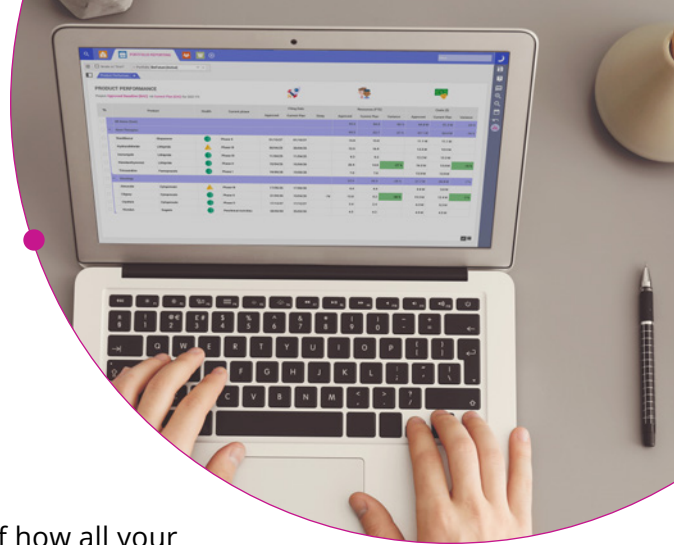
By highlighting important KPIs, this dashboard provides a daily overview of portfolio performance, including budget at completion, estimate at completion, resource capacity, and resource demand. Additionally, it displays top priority risks and their mitigation costs, giving you a heads-up on potential issues. The Planned vs. Budget chart helps ensure spending is on track, while the Cumulative Flow chart provides a clear picture of progress.







# Dashboard #5 Portfolio Health



The Portfolio Health Dashboard provides a clear snapshot of how all your projects are performing, focusing on schedules, resources, and costs.

You can quickly compare your approved plans with their status to spot any gaps, including discrepancies between scheduled resources and costs versus actuals. The visual layout offers a clear, at-a-glance view of where things are on track and where they may need further investigation. For any portfolio manager, this dashboard is invaluable for monitoring project performance and ensuring everything stays on track.

	Product	Health	Current phase	Filing Date			Resources (FTE)			Costs (\$)			
				Approved	Current Plan	Delay	Approved	Current Plan	Variance	Approved	Current Plan	Variance	
<input type="checkbox"/>	All items (Sum)						93.2	84.0	-55 %	94.8 M	91.2 M	-23 %	
<input checked="" type="checkbox"/>	Gene Therapies						69.3	63.7	-27 %	67.1 M	64.4 M	-16 %	
<input type="checkbox"/>	Duodibscur	Glupazone	●	Phase II	01/10/27	01/10/27	15.8	15.8		11.1 M	11.1 M		
<input type="checkbox"/>	Hydrozafelteide	Lithipride	▲	Phase III	30/04/25	30/04/25	16.9	16.9		13.5 M	13.5 M		
<input type="checkbox"/>	Isonurqyde	Lithipride	●	Phase III	11/04/25	11/04/25	9.3	9.3		12.2 M	12.2 M		
<input type="checkbox"/>	Niandanthymmiol	Lithipride	●	Phase II	15/04/26	15/04/26	20.4	14.8	-27 %	16.3 M	13.6 M	-16 %	
<input type="checkbox"/>	Trirosandine	Famoprazole	●	Phase I	19/09/28	19/09/28	7.0	7.0		13.9 M	13.9 M		
<input checked="" type="checkbox"/>	Oncology						23.9	20.3	-28 %	27.7 M	26.8 M	-7 %	
<input type="checkbox"/>	Almondin	Cytoprexate	▲	Phase III	17/05/26	17/05/26	4.4	4.4		3.6 M	3.6 M		
<input type="checkbox"/>	Cilgasy	Cytoprexate	●	Phase II	21/04/26	10/04/26	-7d	12.8	9.2	-28 %	13.3 M	12.4 M	-7 %
<input type="checkbox"/>	Clyeltein	Cytoprexate	●	Phase II	17/12/27	17/12/27	2.4	2.4		6.3 M	6.3 M		
<input type="checkbox"/>	Wundon	Sugarix	●	Preclinical Activities	20/03/30	20/03/30	4.3	4.3		4.5 M	4.5 M		

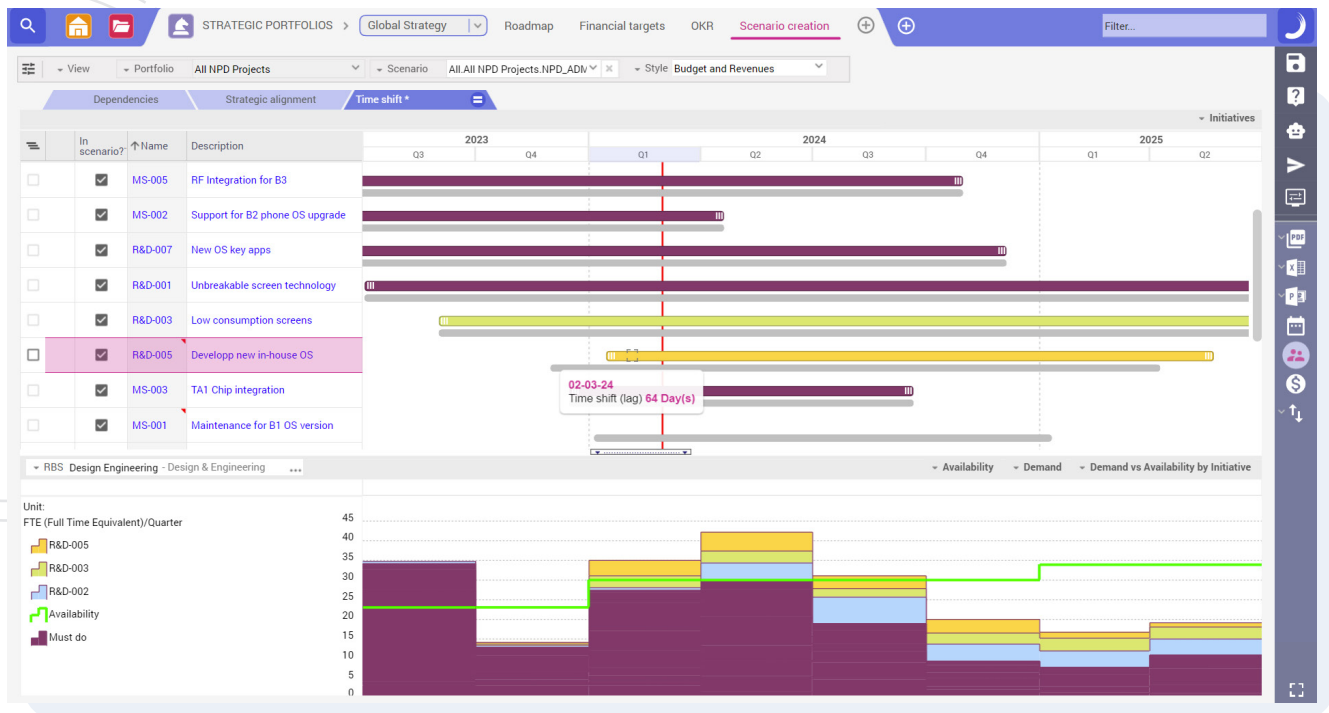


# Dashboard #6 Capacity Planning



Resource and portfolio managers should use the Capacity Planning Dashboard to decide which projects to start, and when are the best times to start them.

In the screenshot, the green line shows your capacity or availability, indicating how many resources you have, and the bars display how much resource capacity you're using for selected projects. This visual layout makes it easy to spot potential capacity issues and adjust your project timelines accordingly. By dragging and dropping projects within this dashboard, you can identify optimal start times, preventing resource overload and planning efficiently for future availability. This approach helps you avoid delays and make the most of your team's capacity.





# Dashboard #7

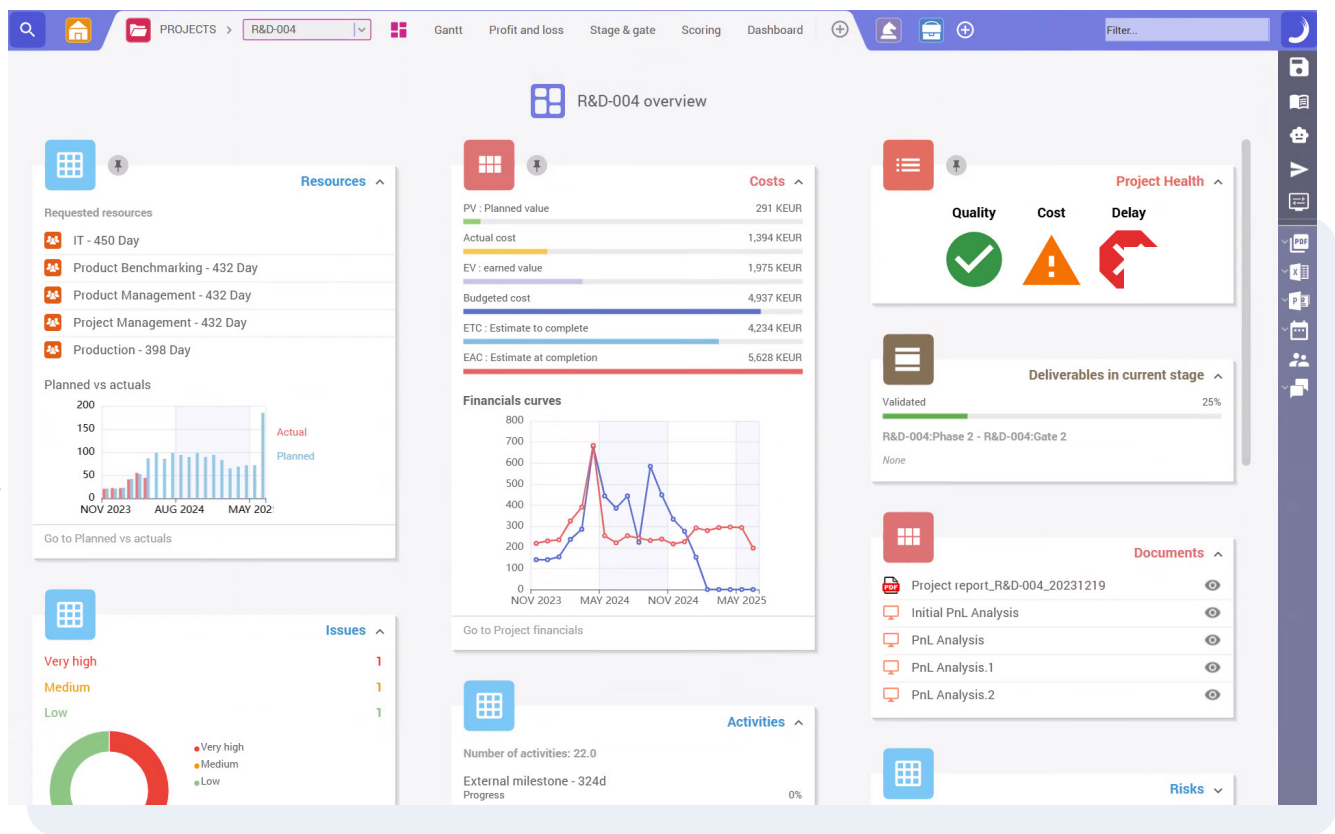
## Project Health



This dashboard gives you a real-time snapshot of your project's status, health indicators, and early warnings for potential issues. In other words, it's designed to give project managers a one-page summary of all the key information about their project.

At a glance, you can see essential details like project identification, financials, health indicators, and risks. This includes the project's budget, forecast, actuals, and any variances. The dashboard also highlights potential risks and their impacts, along with a timeline of project phases from feasibility to design transfer.

For project managers, this tool offers a quick and effective overview of the project's health and allows you to share real-time insights with stakeholders, executives, or clients. You can easily create PDFs or PowerPoint slides from this dashboard, effectively keeping everyone informed and aligned.





# Dashboard #8

## Project Gate Review



This tool is essential for tracking project phases and gate reviews in New Product Development (NPD). It provides a clear status of your stages and gates, showing the current phase and requirements for moving to the next phase.

The dashboard also highlights who is responsible for each task, making it easy to manage and monitor progress. This ensures all necessary steps are completed on time and by the right people, keeping your project on track and smoothly advancing through each development phase.

The screenshot displays a project management dashboard for project R&D-002. The main navigation bar includes options like Gantt, Profit and loss, Stage & gate (selected), Scoring, Dashboard, and Cost and load. The dashboard is divided into several sections:

- Gate deliverables:** A horizontal flowchart showing project stages: Proposal, Discovery, Business Case, Development, and Testing and Validation. Below this, a timeline shows key milestones: "Go to Discovery" (03-10-2023), "Go to Build Business Case" (07-27-2023), "Go to Development" (12-15-2023), "Go to Testing and Validation" (04-09-2024), and "Go to Launch" (06-11-2024). A status message indicates "Some mandatory deliverables are not validated."
- Deliverable(s) for Discovery:** A grid of deliverables, each with a document icon, title, version, and status. The status is either "Mandatory" (radio button) or "Not validated" (checkmark).

Deliverable	Version	Status
Technical Assessment	Version 1.0	Not validated
Product Scorecard	Version 1.0	Not validated
Market Assessment	Version 1.1	Not validated
Manufacturing and Supply Chain Assessment	Version 1.1	Not validated
Intellectual Property Assessment		Not validated
Integrated Product Definition		Not validated
Initial Risk Roster		Not validated
Initial PnL Analysis		Not validated



# Dashboard #9

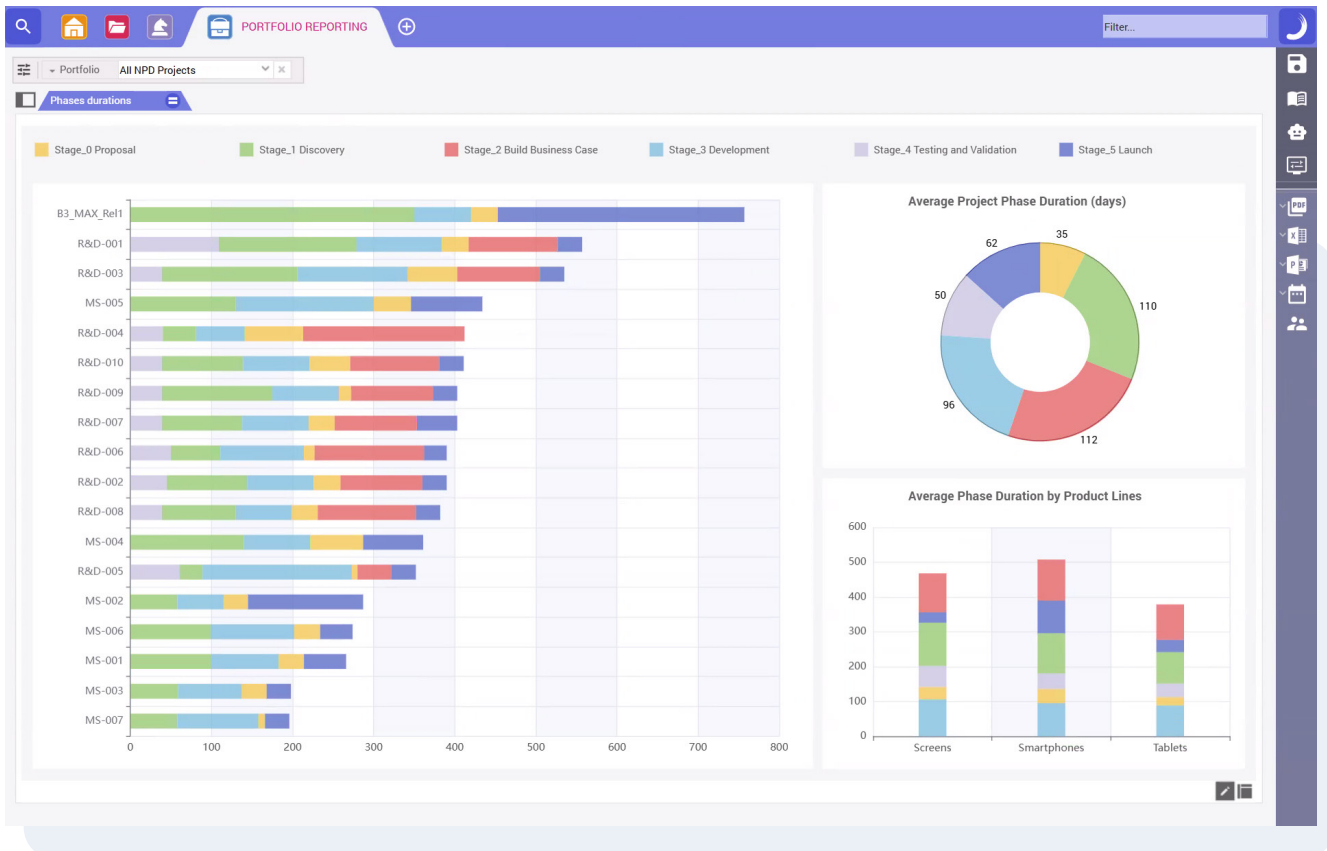
## Cycle Time Report



The Cycle Time Report Dashboard helps you track how quickly you're moving through different phases or activities in your projects. It provides a clear picture of your average cycle times and the actual time spent on each project phase.

On the right, you'll see the average time taken for each phase, while the left side shows the cycle times for individual projects. Each row represents a project, making it easy to spot any outliers or projects that are progressing faster or slower than usual.

This dashboard is crucial for schedule management, enabling you to track progress, identify areas for improvement, and address potential delays and issues. Over time, as your processes improve and you fully utilize Planisware, you should see a decrease in cycle times, leading to faster and more efficient project delivery.





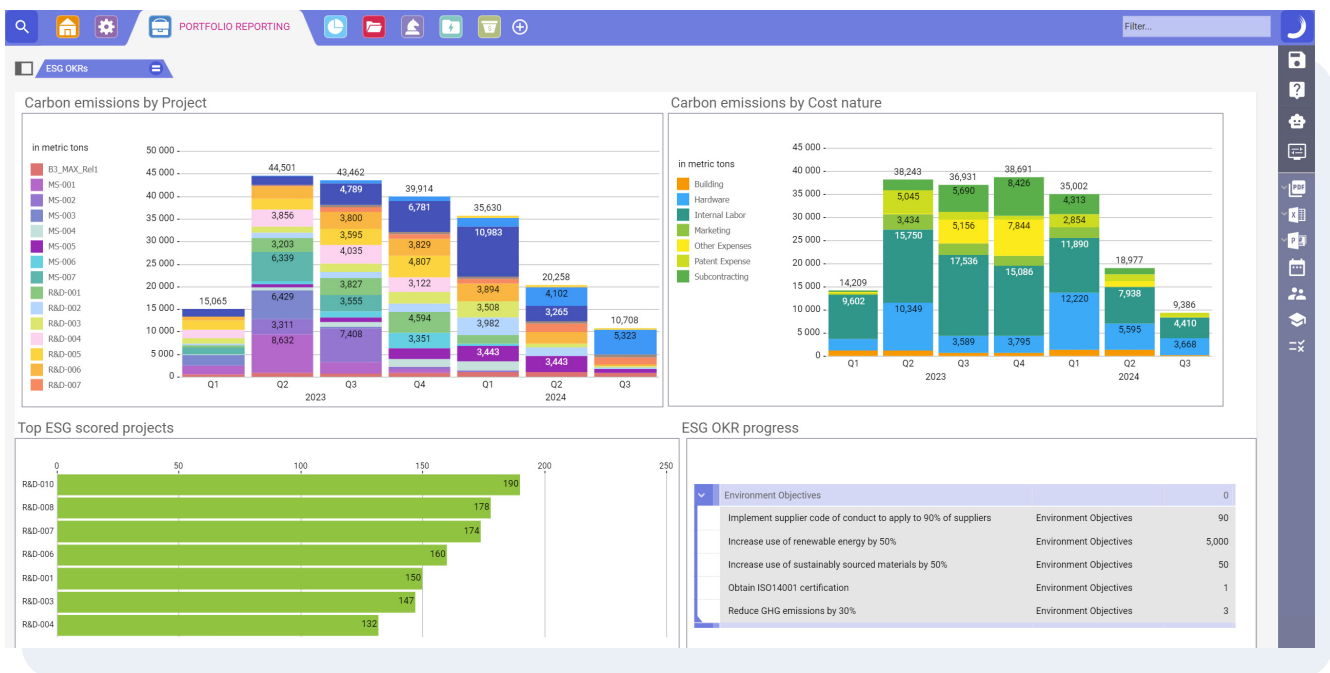
# Dashboard #10

## ESG Portfolio



The ESG Portfolio Dashboard is your go-to tool for tracking environmental metrics across all your projects. This dashboard gives you a clear picture of where your biggest emission contributions are coming from, breaking it down by project.

You can easily score your projects based on ESG criteria and see which ones lead the pack. It's like having a one-stop shop for all your compliance and performance metrics, allowing you to quickly assess how your projects align with ESG goals and ensure you're hitting those environmental targets. It's all right here on one screen, making it straightforward to stay on top of your sustainability efforts.



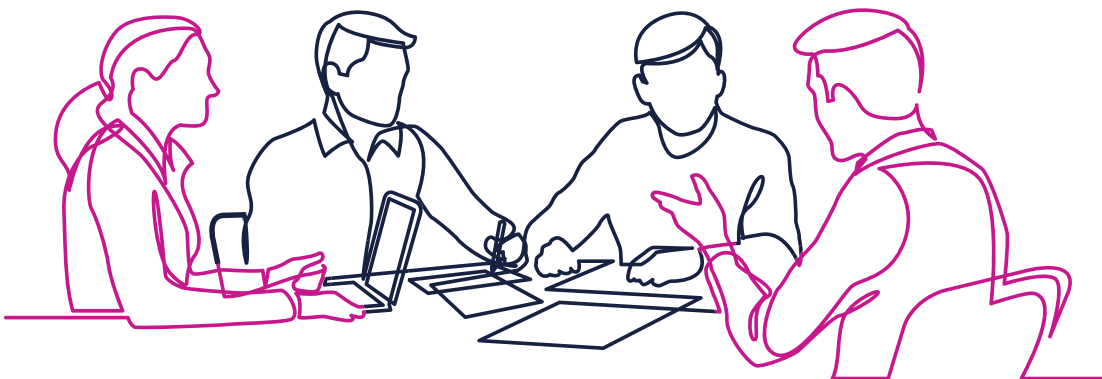


# Conclusion

These top ten dashboards are your secret weapons to master your PMO. By integrating them into your workflow, you'll gain real-time insights and data to make smart decisions, streamline operations, and hit your goals.

Whether you're managing ideas, resources, or ensuring you meet environmental standards, these dashboards have you covered with a clear, visual snapshot of your project's health, so you can stay on top of progress and fix issues before they escalate.

Ready to transform your portfolio management? Start using these dashboards today and see the difference. Here's to smoother projects and greater success!





[www.planisware.com](http://www.planisware.com)

[info@planisware.com](mailto:info@planisware.com)

---

555 Montgomery Street, Suite 1300  
San Francisco, CA 94111  
E: [info@planisware.com](mailto:info@planisware.com)

