

# 10 Plug-and-Play Dashboards for Instant PMO Impact



# Table of Contents

Introduction	03
1 – Personal Command Center Dashboard	04
2 – Intake Dashboard	05
3 – Portfolio Snapshot Dashboard	06
4 – The Stage Gate Program Dashboard	07
5 – Portfolio Prioritization Dashboard	08
6 – Project Prioritization Dashboard	09
7 – CFO Dashboard	10
8 – Project Progress Report Dashboard	11
9 – Software Development Dashboard	12
10 – Resource Dashboard	13



# Introduction

Running a PMO in a small or midsize business isn't easy—you've got tight budgets, limited resources, and the pressure to make quick decisions. That's why the right dashboards can make all the difference. In this eBook, we're diving into ten must-have dashboards that will keep your PMO running smoothly, help you stay on top of your projects, and make your life a whole lot easier. Whether you're tracking project progress, managing resources, or keeping an eye on risks, these dashboards give you the insights you need to stay in control.

You'll find dashboards that act like your personal command center, putting everything you need right in front of you, and risk matrices that help you catch problems before they happen. Each one is designed to help you work smarter, not harder. So, let's jump in and explore how these tools can help you keep your PMO sharp, your projects on track, and your team ahead of the game!



# 1 Personal Command Center Dashboard



The Planisware Orchestra dashboard is your project command center, giving you control with a simple, one-stop view. You can set up widgets to show what matters most—active projects, investment portfolios, or review gates—so key updates are always within reach. The dashboard refreshes in real-time to keep your project insights current without extra work. It helps you track progress, make decisions fast, and keep projects on course. More than a dashboard, it's a workspace that adapts to your needs, keeping you connected, informed, and ready to act.

The screenshot displays the Planisware Orchestra dashboard with the following sections:

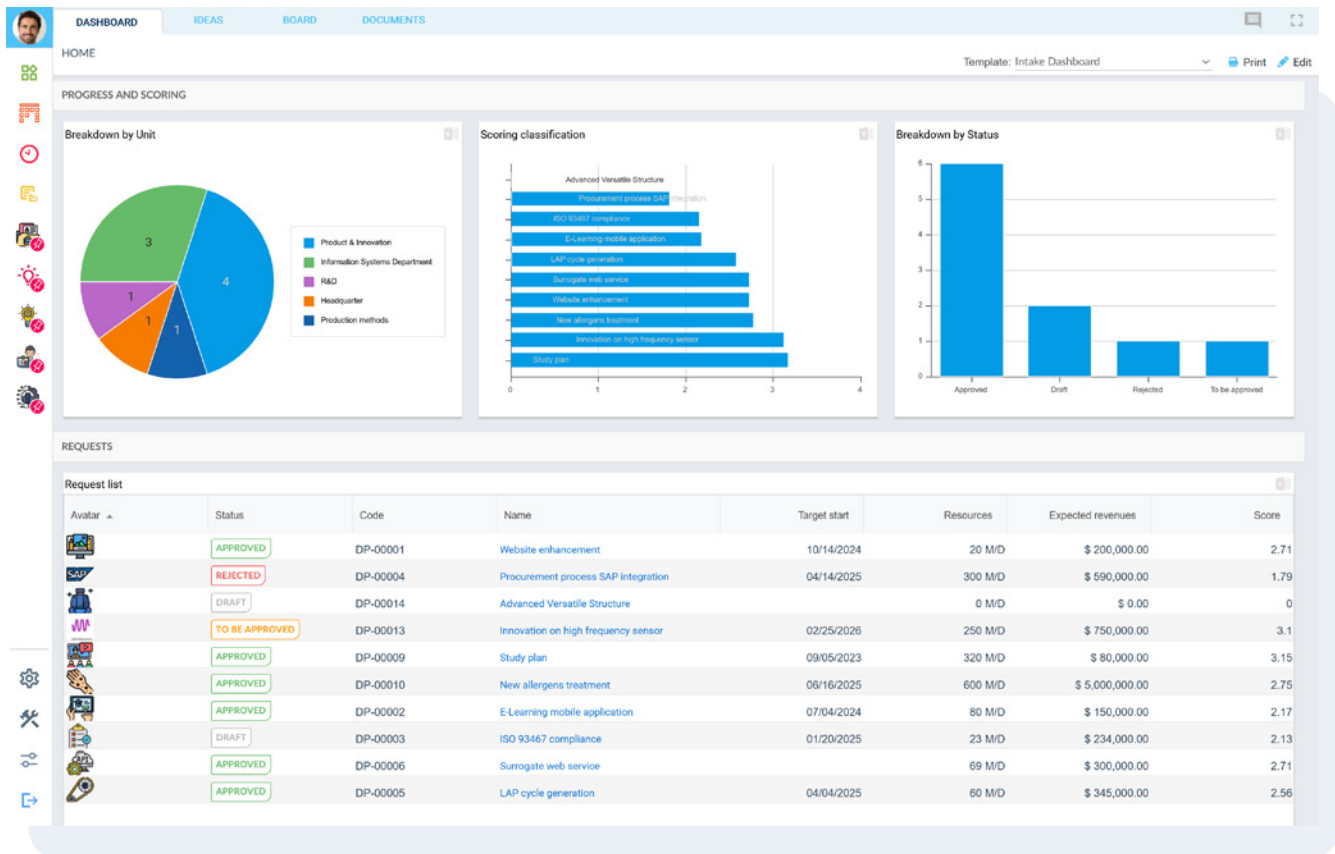
- MY INVESTMENT PORTFOLIOS:** Shows 27 Projects, a forecast cost of \$50,715,340, and a forecast load of 19,613.8 d.
- OBJECTIVES TO UPDATE:** Lists an objective: "QUA-000001 | To reduce the # of bugs (open tickets) by 50% | Business Master Plan" with a "TO UPDATE" button.
- MY DASHBOARDS:** Lists three dashboards: "IT Project Roadmap" (Manager: Max Meyer), "Risks" (Manager: Max Meyer), and "Intake Dashboard" (Manager: Samantha Coats).
- PROJECTS WHERE I AM INVOLVED:** Lists three projects: "SWD C1 | Analytics App Launch" (32% IN PROGRESS), "ITB C1 | Website re-design" (35% IN PROGRESS), and "RBI C1 | Mechanical optimization" (23% IN PROGRESS).
- GATES TO REVIEW:** Shows one gate: "Go to Phase III | Project LFS C1" (Manager: Steven Rillo, July 24, 2024) with an "IN REVIEW" button.
- MY ACTIVE PROJECTS:** Lists two projects: "RBI C1 | Mechanical optimization" (23% IN PROGRESS) and "MKT C1 | Management of all marketing dept actions" (62% READY).



## 2 Intake Dashboard



The Intake Dashboard gives you control over every project request in your system, designed for pipeline managers and PMOs who need a quick view of what's coming. It lets you see which departments submit the most requests, track each one's status, and compare them based on strategic priorities. Track all requests in one place—know which are approved, in draft, or rejected and their current workflow stage. Prioritize easily with scoring tools, so your focus stays on the most crucial projects. Get key insights fast to prepare for review meetings, stay organized, efficient, and ready to act.



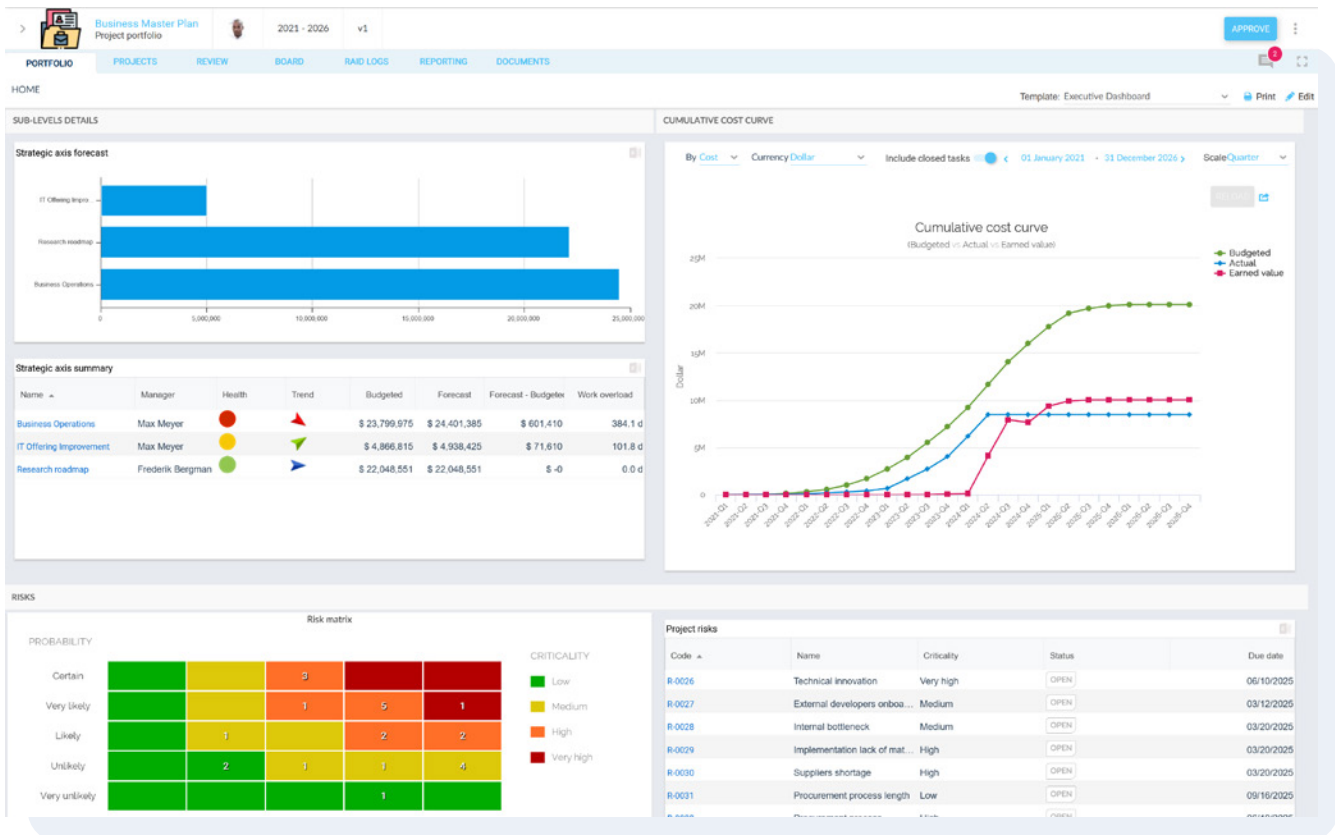




# 3 Portfolio Snapshot Dashboard



This dashboard gives you complete control over your investments, providing portfolio managers, executives, and PMO leaders a clear look at spending. Quickly see what each department budgets, forecasts, and actually spends, helping you track costs and spot issues in real time. Compare budgeted and actual spending with a cost curve that shows when and where any overruns happen. The risk matrix helps you find issues early, so you can solve them before they grow. With everything in one place, you'll stay informed and ready to make quick decisions to keep your portfolio aligned with your goals.

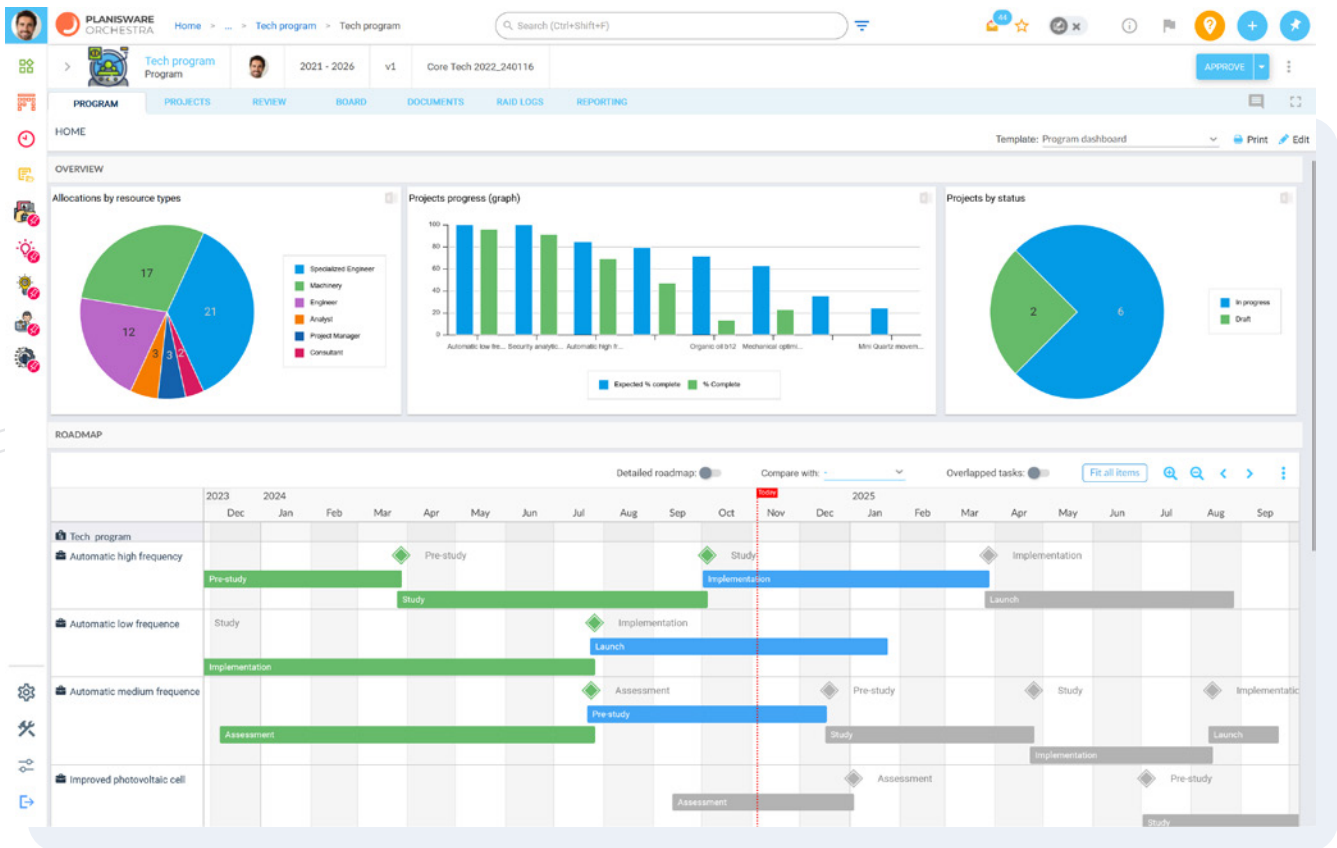




# 4 The Stage Gate Program Dashboard

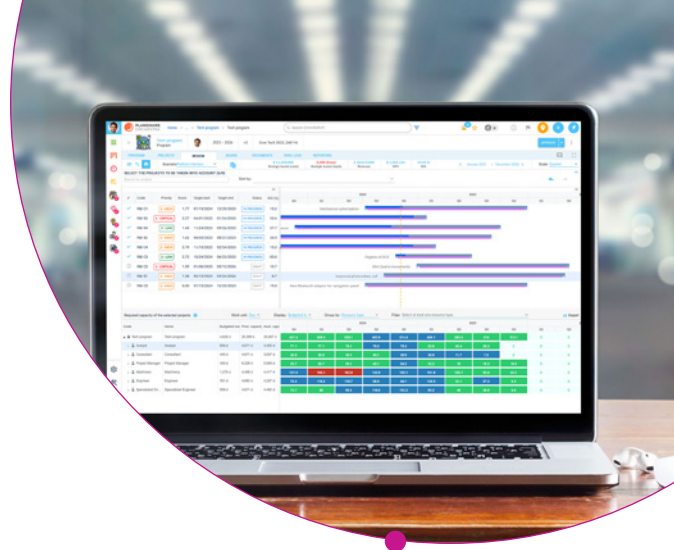


The Stage Gate Program Dashboard gives program managers a clear view of each phase, from assessment to launch. It's built for managing complex lifecycles, like New Product Development (NPD), where tracking timelines is key. See exactly where projects stand and spot delays or bottlenecks fast by checking start and end dates. The dashboard also highlights risks early so you can adjust plans and stay on track. With a high-level view of every initiative, you stay informed and ready to act, driving projects forward without constant updates or meetings.





# 5 Portfolio Prioritization Dashboard



The Portfolio Prioritization Dashboard puts you firmly in charge of all upcoming projects, helping you see what's most important, when each project starts, and how much effort is required. This tool is built for program managers, department heads, and steering committees. Dive directly into your project lineup, plan resources, and make quick, smart choices. With a clear timeline, you see what's already started, what's coming next, and what needs immediate attention. Spot resource bottlenecks in seconds, adjusting plans to keep your roadmap on course. Testing different scenarios—like prioritizing new AI projects—is easy, showing if you have enough resources or need to shift priorities, hire, or adjust dates. This dashboard guides every choice about where to invest, what to pause, or where to add help, ensuring everything runs smoothly and efficiently.

The screenshot displays the Planisware Orchestra interface for a 'Tech program'. Key elements include:

- Navigation:** Home, Tech program, Search (Ctrl+Shift+F), and various utility icons.
- Program Summary:** Scenario: Platform Horizon, Strategic bucket (costs): \$ 11,350,000, Strategic bucket (load): 3,400 (Days), Revenues: \$ 10,015,000, NPV: \$ 1,362,124, ROI: 19.65 %.
- Project List:** A table with columns for Code, Priority, Score, Target start, Target end, Status, and ROI (%). Projects include R&I C1 through R&I C5 with various priorities (e.g., 2-HIGH, 1-CRITICAL, 3-LOW).
- Gantt Chart:** A timeline view showing project durations from Q4 2024 to Q2 2025. Projects include Mechanical optimization, Organic oil b12, Mini Quartz movements, Improved photovoltaic cell, and New Bluetooth adaptor for navigation panel.
- Resource Capacity Table:** A table showing required capacity for selected projects across quarters for 2024 and 2025. Resources include Analyst, Consultant, Project Manager, Machinery, Engineer, and Specialized Engineer.

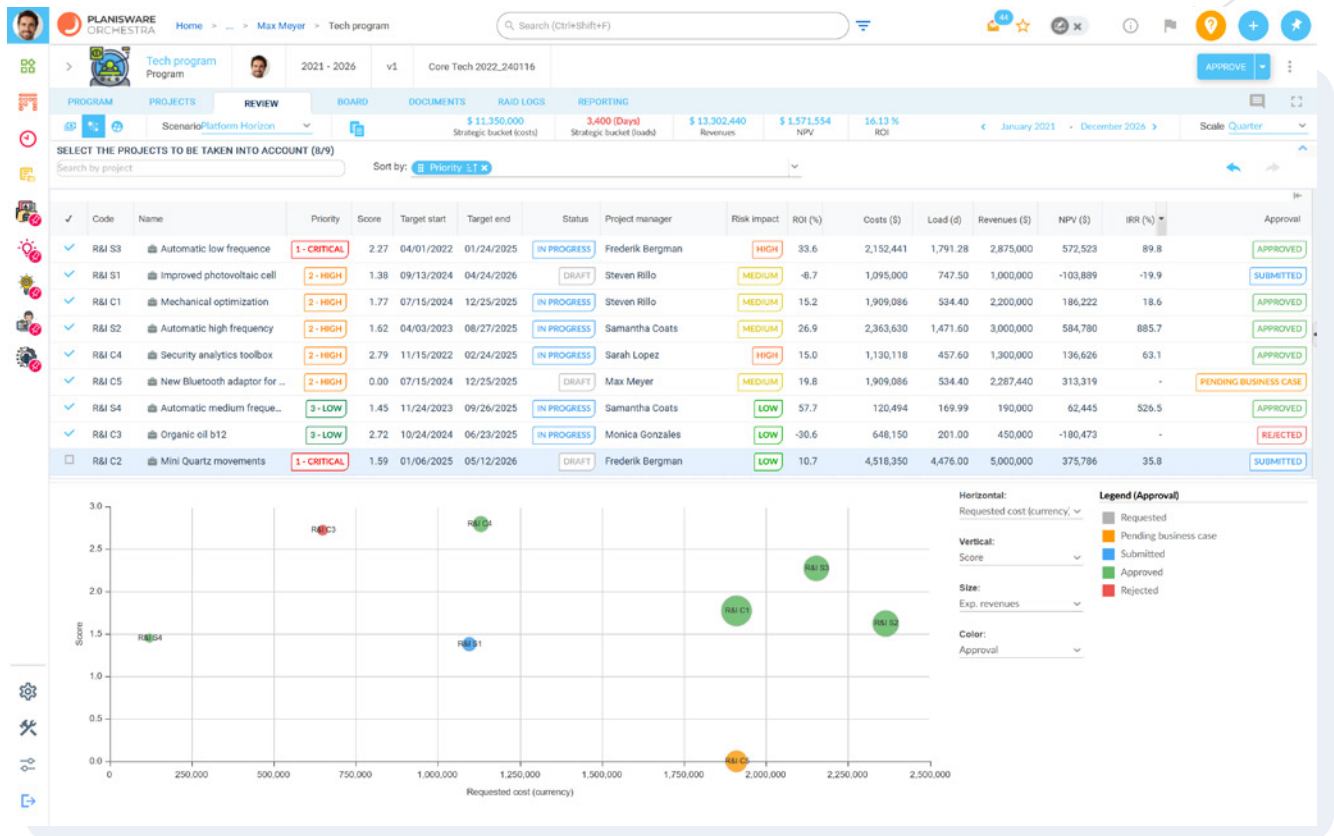




# 6 Project Prioritization Dashboard

The Project Prioritization Dashboard helps you choose high-impact projects by showing their financial and strategic value. Whether you're a program manager, PMO head, or CFO, this view puts all projects in one place, letting you see which drive the most value. With ROI, NPV, and IRR insights at a glance, you know exactly where to invest time, money, and resources.

It boosts your decisions by quickly lining up projects side by side, checking financials, approvals, and pending status to see what's worth the effort. Focus on the benefits each project offers. Prioritize those which deliver the most value. When resources are tight, use this tool to drop low-priority projects and double down on what matters most. This dashboard keeps you in control, helping you back the right projects, pause where needed, and keep your portfolio aligned with your goals.

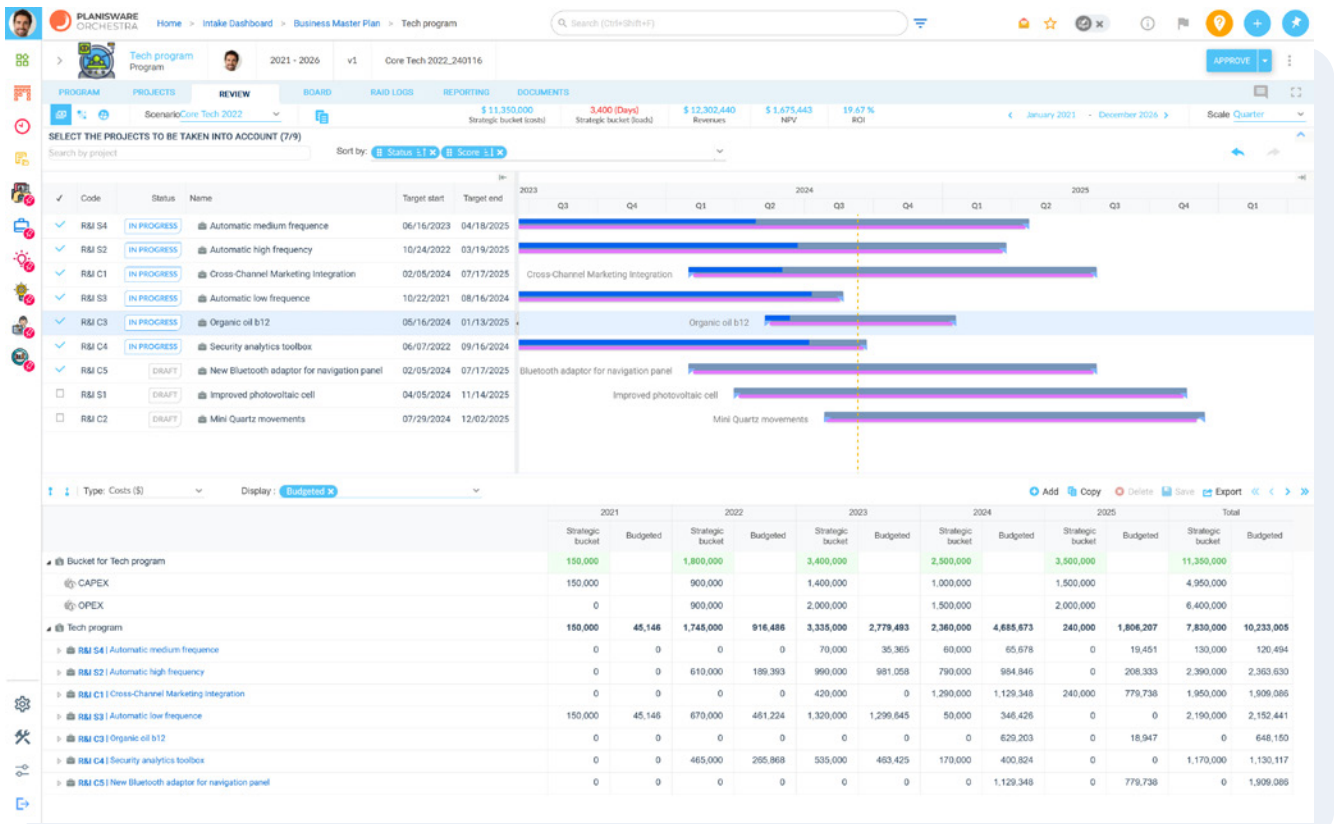




# 7 CFO Dashboard



The CFO Dashboard provides a clear view of your project budgets and investments, showing all ongoing and planned projects at a glance. But the real advantage is in the budgeting section, where you can set caps, track spending, and ensure everything stays on course. Designed for PMOs, finance heads, and those involved in capital planning, this tool helps keep finances aligned with strategy. Set budget limits for each project and instantly see if spending exceeds expectations—decide whether to fund, adjust, or cut as needed. Quickly confirm that your spending aligns with strategic goals and get real-time financial feedback to catch issues early. This dashboard keeps your budget on track and your projects aligned with your financial strategy, helping you make proactive adjustments when necessary.

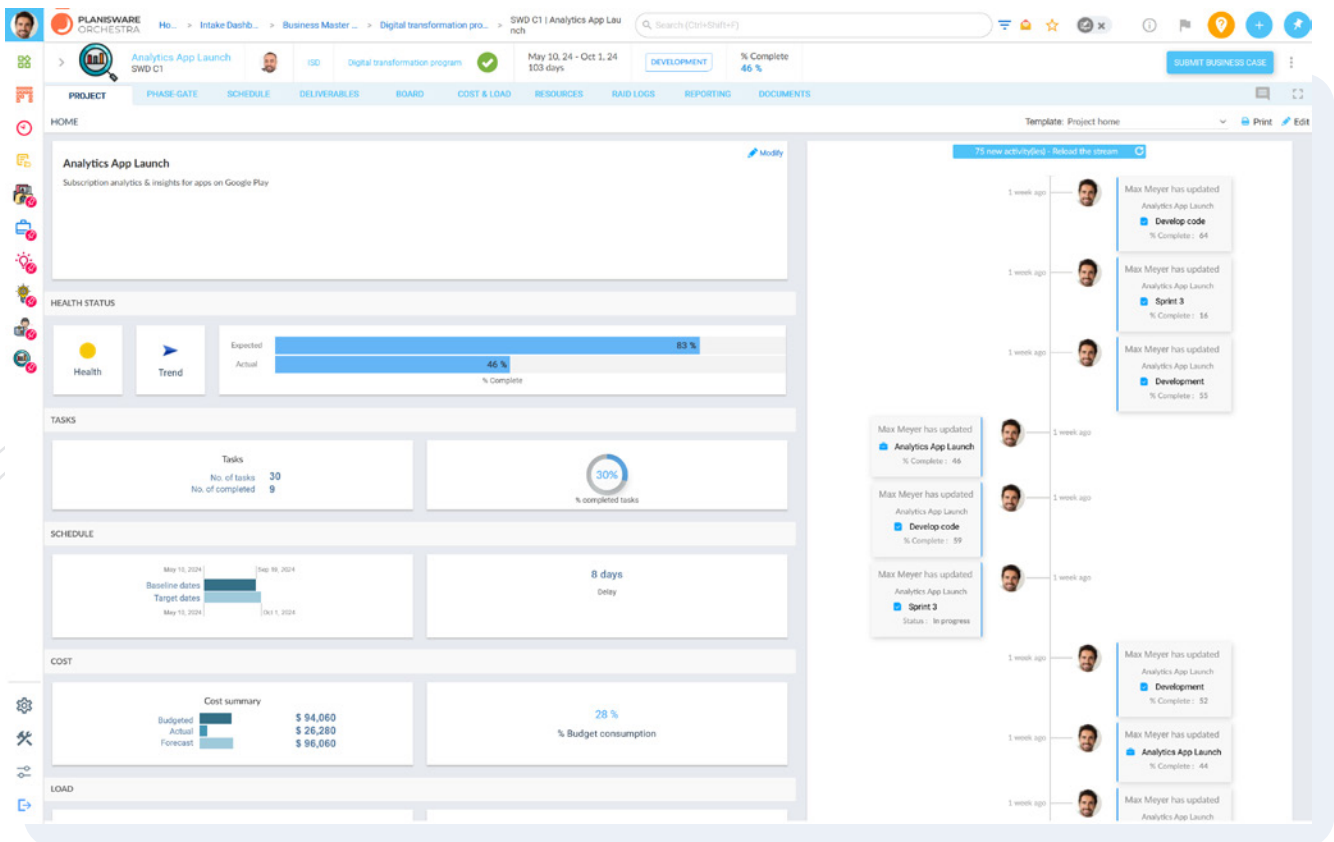




# 8 Project Progress Report Dashboard

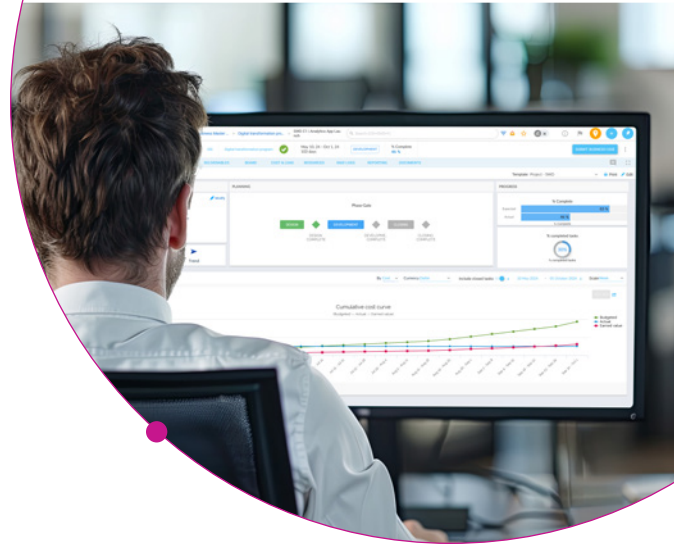


The Project Progress Report Dashboard is your go-to tool for tracking the health and status of any project. Ideal for program managers and project leads—even those who aren't traditional project managers—this dashboard gathers key metrics in one convenient place. You'll get a quick snapshot of project health, showing completed tasks, overall progress, and how close you are to reaching your goals. Check if your project is on schedule. Spot delays early so you can make adjustments before issues escalate. Keep an eye on your budget with clear views of forecasted and actual spending, helping you stay financially on track and plan ahead. This dashboard equips you with everything needed to manage timelines, tasks, and costs efficiently—all without sifting through endless reports.

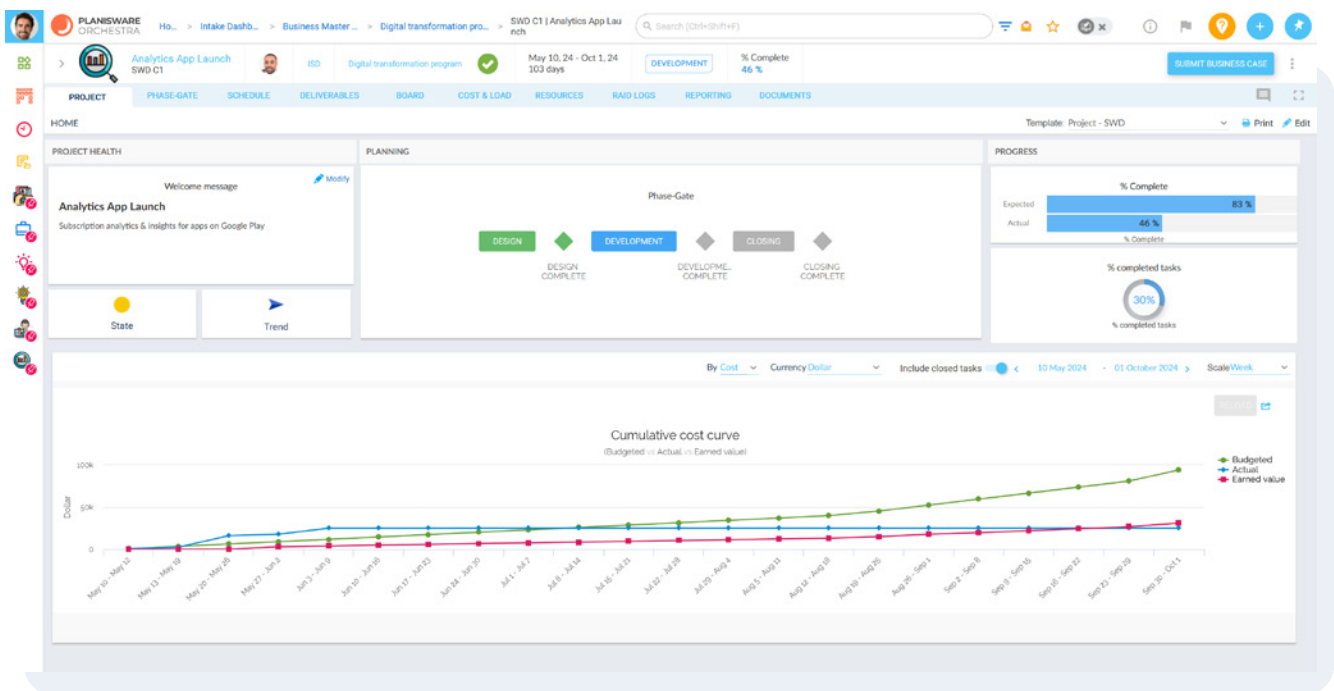




# 9 Software Development Dashboard



The SWD Dashboard keeps your project on track by showing exactly where you are in the phase gate process. It gives you a clear visual of the current stage—right now, in deep development—so you can easily update your team on progress and next steps to ensure strong governance and alignment. You can see the project’s lifecycle stage at a glance and keep everyone focused on tasks and milestones ahead. The dashboard’s clickable icons link directly to key deliverables, making documents instantly accessible. It provides cost and progress insights, showing your budget, actual costs, and earned value to track financial health. Use the welcome message to set weekly priorities and highlight tasks to keep the whole team informed and aligned on goals. Project managers have an essential tool to manage health, progress, and planning in software development so everyone knows what’s happening and what’s next.



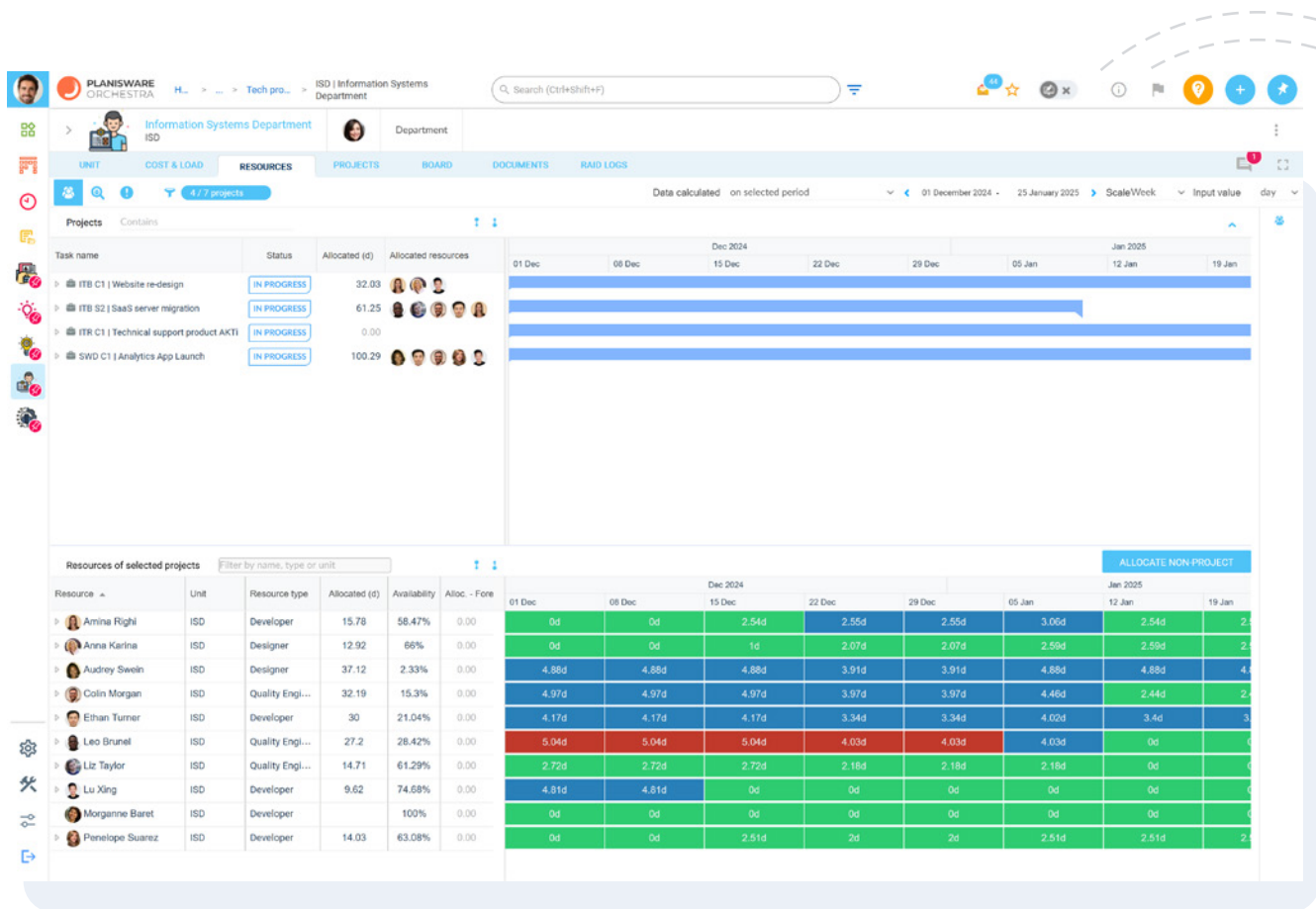




# 10 Resource Dashboard



The Resource Dashboard puts you in control of your team’s workload, showing clearly who’s working on what and what’s coming up. It’s an essential tool to manage time, spot over-booked team members, and make quick adjustments. Whether you’re handling current projects or planning for future work, this dashboard helps keep everything balanced and your team running smoothly. Instantly check who’s busy and who has availability. If someone is overloaded, you’ll spot it right away and can reassign tasks to prevent issues. Stay ahead by tracking upcoming tasks and projects, so you’ll know who’s ready to take on new work and make staffing decisions seamlessly. Additionally, monitor labor costs associated with each project—crucial for making budget-conscious choices as your PMO grows. This dashboard keeps you informed and in control, helping you allocate resources wisely and keep both projects and people on track.







[www.planisware.com](http://www.planisware.com)

[info@planisware.com](mailto:info@planisware.com)

---

555 Montgomery St, Suite 1300  
San Francisco, CA 94104

