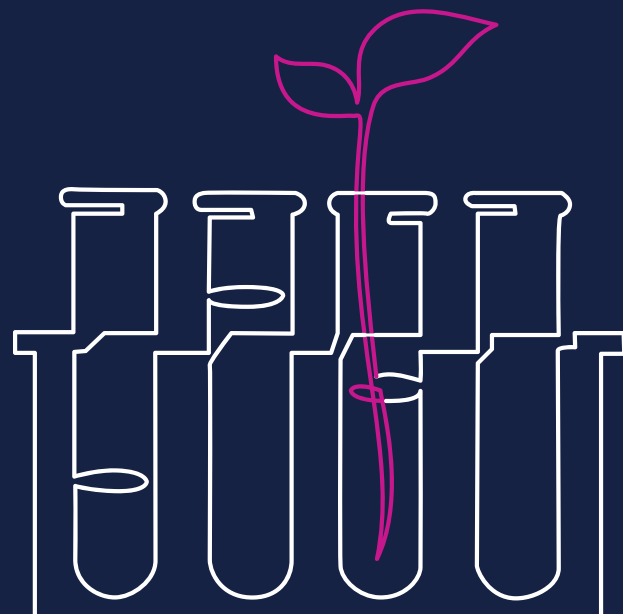


Transforming Project Management for a Research-Based Global Pharma Company



This fast-growing, research-based global pharmaceutical company was established ten years ago. It has rapidly expanded its operations across the US, the EU, and China. With over two thousand employees, they develop innovative treatments for cancer, infectious diseases, autoimmune issues, and neurological disorders. They are committed to projects that have the potential to transform lives and revolutionize medicine. But managing their diverse and complex project portfolio has been a challenge.

Moving from Spreadsheet Chaos to Organized Management

As the biopharma firm company grew, managing projects got harder. At first, they used Excel and a Clinical Trial Management System (CTMS) for their clinical lab operations. This setup was fine in the beginning when they had just a few products. As the company expanded, and the number of projects increased, handling data through Excel became overwhelming and unmanageable.

Their IT department managed offline project and financial processes, leading to data inconsistencies and collaboration difficulties. The Project Portfolio Management (PPM) team struggled with working in silos, relying heavily on Excel and SharePoint.

The Finance team was bogged down by manual processes that took a lot of time.

Planisware Brings Order and Efficiency

To solve these problems, they decided to bring in Planisware because of its strong reputation and extensive features. The company's leaders had good experiences with Planisware in past projects and companies, so they knew it could help.

Upon deploying Planisware, they experienced positive change almost immediately. The platform streamlined data flows and eliminated misalignments among teams. This made the departments' work more efficient and collaborative.

A manager from the Clinical Development team said, “Planisware is not just a project portfolio management tool. It’s our compass in navigating the complexities between clinical development and IT management.” Another team member noted, “The clarity Planisware provides liberates us from offline work.”

Planisware Drives Significant Improvements Across the Organization

Time Savings and Data Alignment:

The IT department no longer needed to manually align data. This saved over 20 hours a week, and reduced the time spent on reporting by 30%. This streamlined data management, reduced errors, and boosted efficiency. A clinical development and IT support manager said, “Planisware saves us from the tedious offline troubleshooting we used to face.”

Improved Collaboration:

Planisware’s centralized approach broke down the PPM team’s most problematic silos. By aligning various projects on a single platform, the team could collaborate and communicate better. This ensured everyone was on the same page—a necessity for managing complex projects. The VP of Portfolio and Program Management said, “Planisware transformed our PPM by not just breaking down silos but obliterating them. We now have a central platform that helps cross-functional collaboration and ensures everyone is on the same page.”

“ Planisware transformed our PPM by not just breaking down silos but obliterating them. We now have a central platform that helps cross-functional collaboration and ensures everyone is on the same page”

VP of PPM, VP of Portfolio and Program

Streamlined Financial Management:

The Finance team also saw significant enhancements. Planisware streamlined processes such as budget tracking, expense reporting, and financial forecasting. This reduced the time spent on data input by 25%, allowing the team to focus on more strategic tasks. With financial data easier to access and analyze, decision-making and budgeting became much more effective.

Data Excellence:

During the clinical phase, the PPM team used Planisware to create detailed, compound-level information enriched with study-level details and metadata that integrated seamlessly into their CTMS and Workday HR systems. This ensured data consistency and alignment. This integration saved the teams time and effort, streamlining critical processes and making operations much smoother. This precision in data handling drives the company towards operational excellence and innovation. A team member said, “Planisware supports our unique design and business processes, transforming it into a collaborative hub for cohesive organizational functioning.



Looking to the Future

Looking ahead, the company has ambitious plans to leverage AI for advanced data insights and forecasting. They see Planisware as a crucial partner in their journey towards integrating artificial intelligence into their long-term strategic planning. By using AI, they aim to enhance their predictive capabilities which will allow them to foresee and mitigate potential challenges before they arise. This will subsequently optimize resource management, ensuring that every project is executed with maximum efficiency and impact.

This forward-thinking approach, supported by Planisware, is expected to make effective treatments for cancer, infectious diseases, autoimmune issues, and neurological disorders a reality more quickly. The company is committed to transforming patient care, striving to become an industry leader, and setting new standards in the development of life-saving treatments by pushing the boundaries of what is possible with pharma R&D. This dedication to excellence and innovation promises a profound impact on patients worldwide.